

## "Walnut Hills"



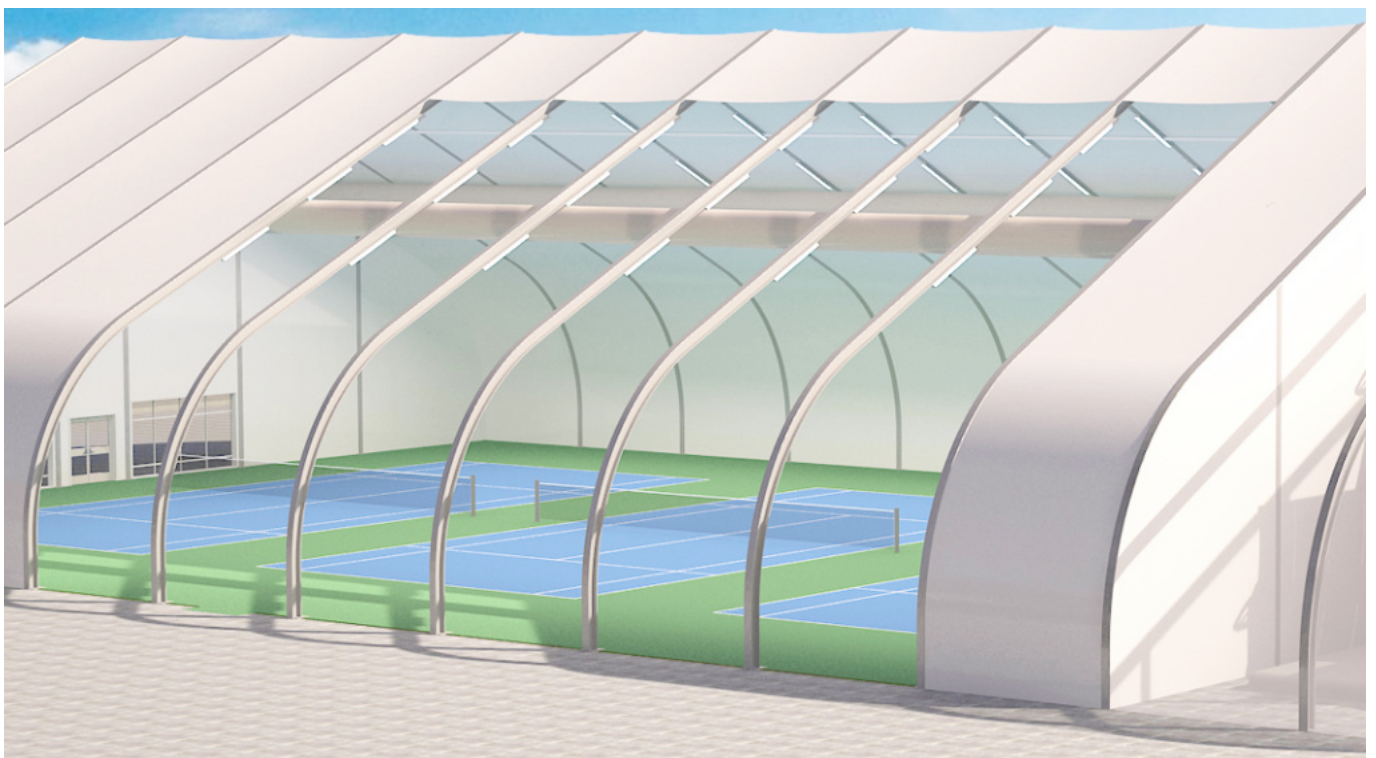
Jonathon Fenton

[johnathon.fenton@sprung.com](mailto:johnathon.fenton@sprung.com)

**tennisPlex**

Thomas Wenger

[thomas.wenger@instaplex.ch](mailto:thomas.wenger@instaplex.ch)



[info@instaplex.ch](mailto:info@instaplex.ch)

+41 76 575 05 78

**instaPlex**, Via F. A. Giorgioli 13, CH-6964 Arzo

**[www.instaplex.ch](http://www.instaplex.ch)**

Manufactures representative Sprung Instant Structures Ltd.  
Schweiz, Lichtenstein, Deutschland, Österreich & Italia

# Das Projekt

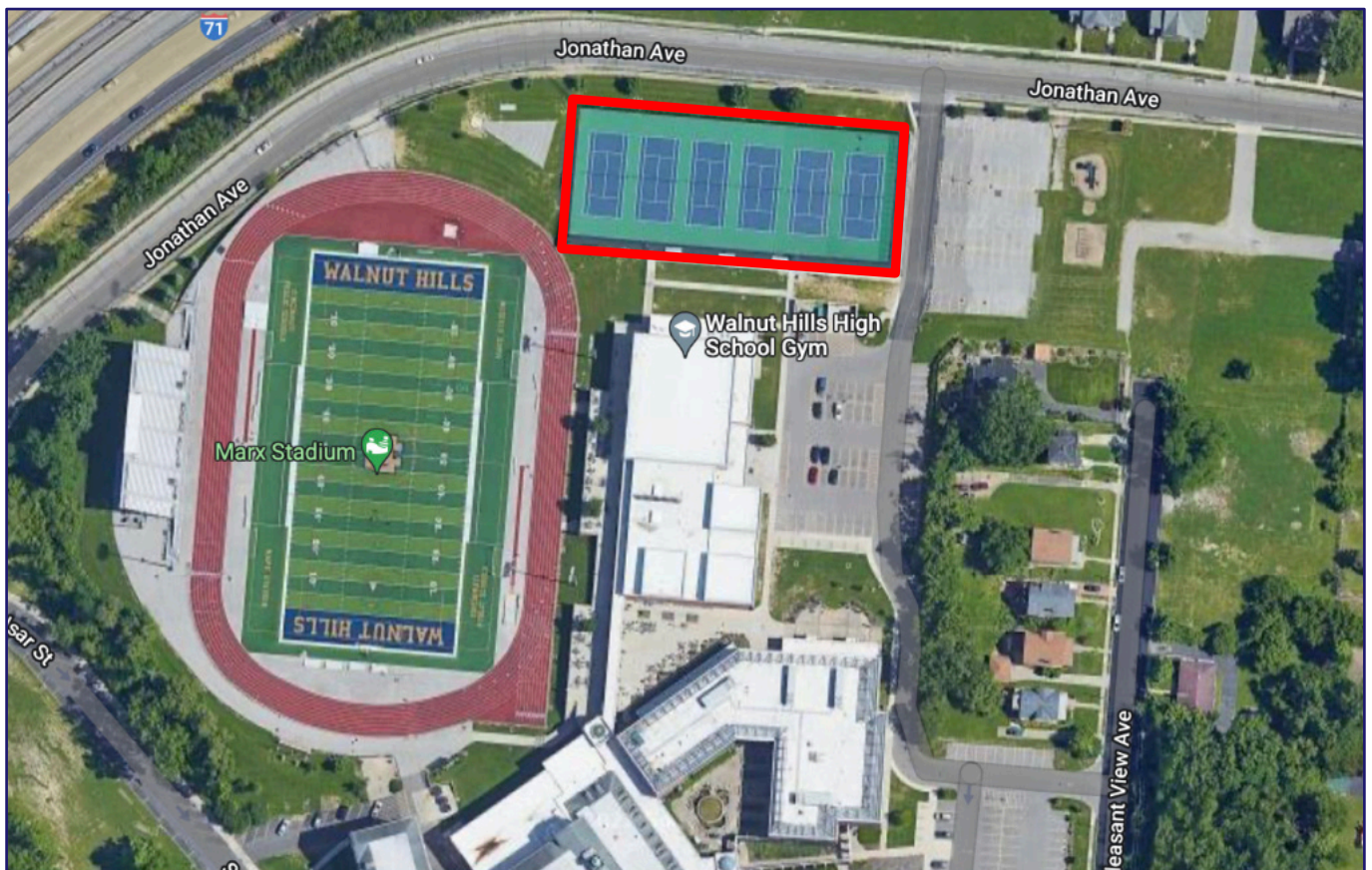
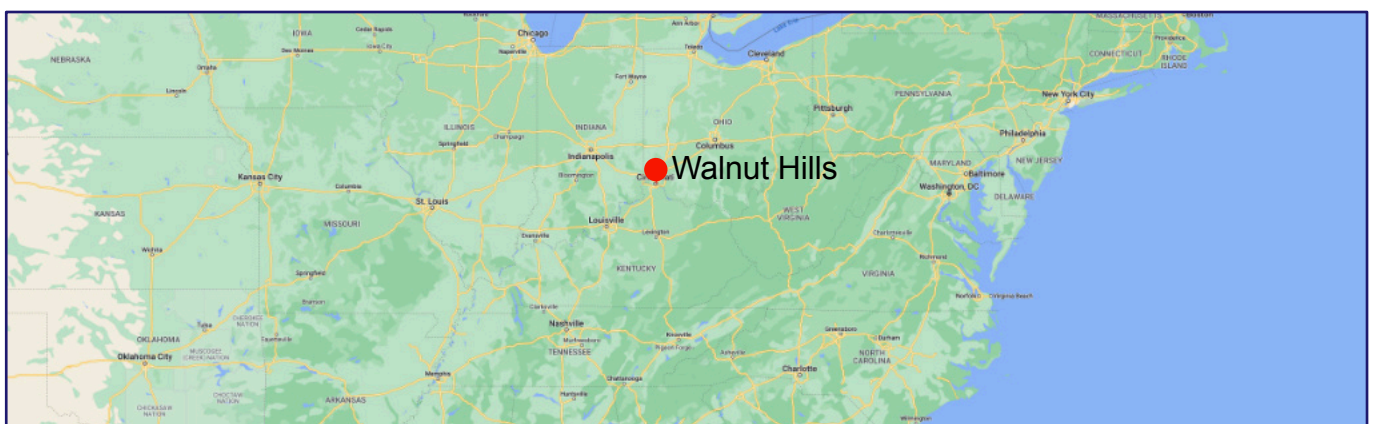
## Tennishalle mit 6 Courts

Die Schule (High School) von Walnut Hills in Ohio USA hat eine grosse Sportinfrastruktur. Unter anderem ein Tennis Platz mit 6 Spielfeldern. Um diesen das ganze Jahr betreiben zu können, hat Sprung Structures eine neue isolierte Tennis Halle geliefert.

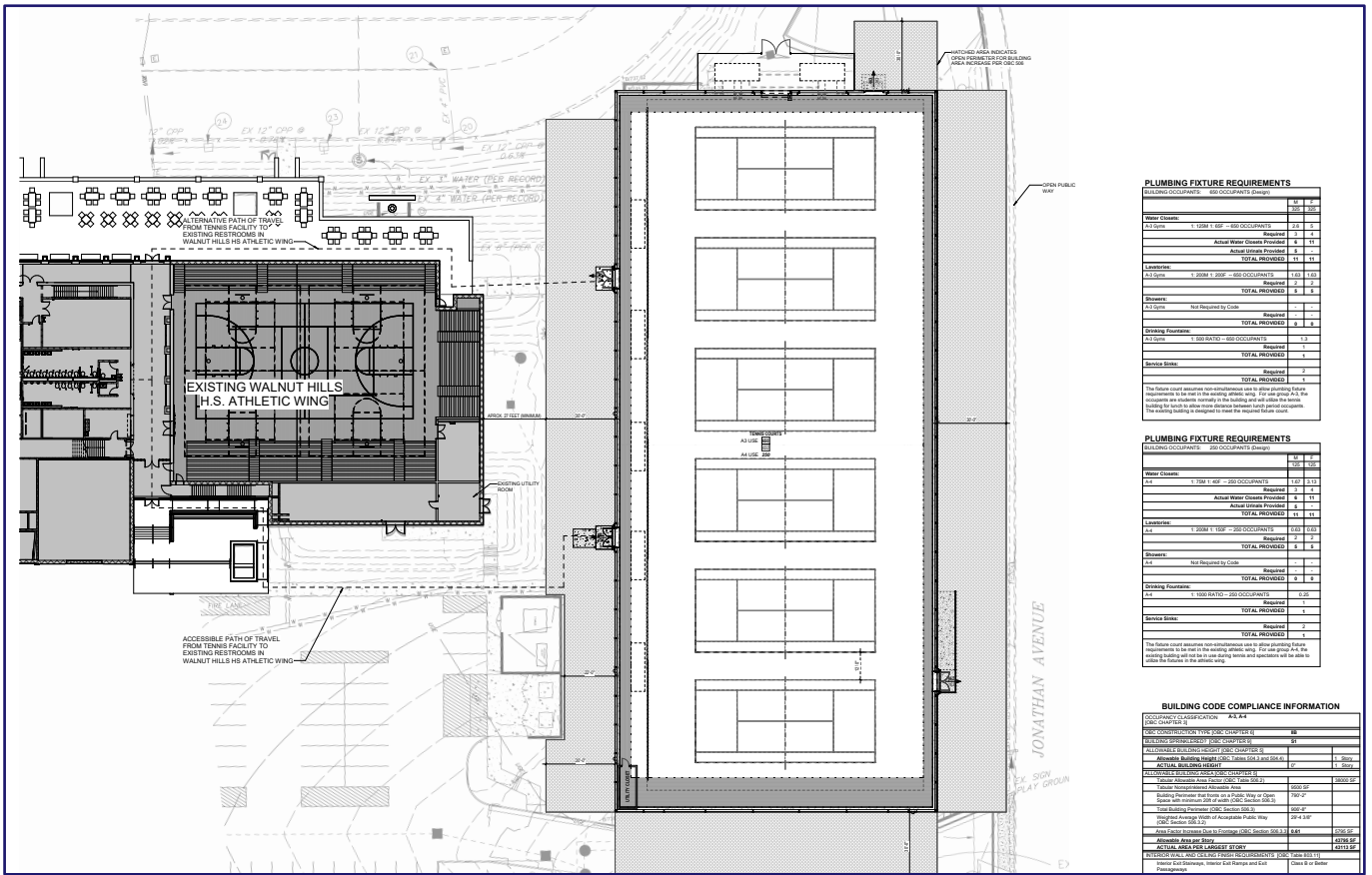
Der hochmoderne, energieeffiziente, **4059m<sup>2</sup>** grosse **tennisPlex** ist **42.6m** breit und **95.3m** lang. Die Höhe über dem Netz beträgt **15.4m**.

Aufgrund der Beschaffenheit der innen Membrane ist es möglich die ganze Halle mit einer **indirekten, schattenfreien Beleuchtung** zu betreiben.

## Lage:



# Baupläne



**PLUMBING FIXTURE REQUIREMENTS**  
BUILDING OCCUPANCY: 200 OCCUPANTS (2000)

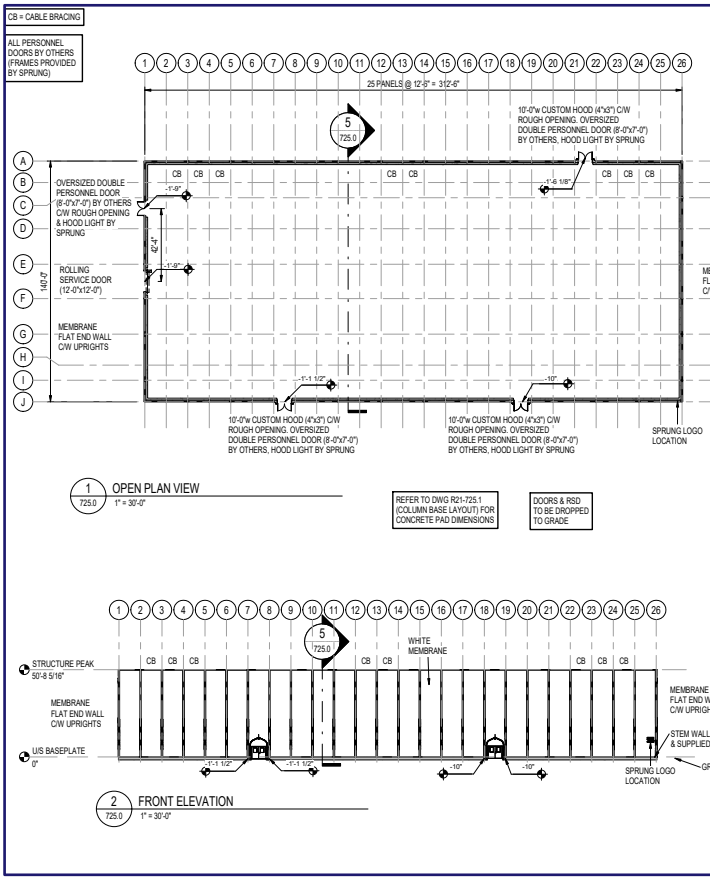
Water Fixtures	1.100	1.100	1.100
Actual Water Fixtures Provided	1.100	1.100	1.100
Actual Water Fixtures Required	1.100	1.100	1.100
<b>TOTAL PROVIDED</b>	1.100	1.100	1.100
<b>TOTAL REQUIRED</b>	1.100	1.100	1.100
Drainage	1.100	1.100	1.100
Actual Drainage Provided	1.100	1.100	1.100
Actual Drainage Required	1.100	1.100	1.100
<b>TOTAL PROVIDED</b>	1.100	1.100	1.100
<b>TOTAL REQUIRED</b>	1.100	1.100	1.100
Drainage	1.100	1.100	1.100
Actual Drainage Provided	1.100	1.100	1.100
Actual Drainage Required	1.100	1.100	1.100
<b>TOTAL PROVIDED</b>	1.100	1.100	1.100
<b>TOTAL REQUIRED</b>	1.100	1.100	1.100

**PLUMBING FIXTURE REQUIREMENTS**  
BUILDING OCCUPANCY: 200 OCCUPANTS (2000)

Water Fixtures	1.100	1.100	1.100
Actual Water Fixtures Provided	1.100	1.100	1.100
Actual Water Fixtures Required	1.100	1.100	1.100
<b>TOTAL PROVIDED</b>	1.100	1.100	1.100
<b>TOTAL REQUIRED</b>	1.100	1.100	1.100
Drainage	1.100	1.100	1.100
Actual Drainage Provided	1.100	1.100	1.100
Actual Drainage Required	1.100	1.100	1.100
<b>TOTAL PROVIDED</b>	1.100	1.100	1.100
<b>TOTAL REQUIRED</b>	1.100	1.100	1.100

**BUILDING CODE COMPLIANCE INFORMATION**

Code Reference	Requirement	Compliance
International Building Code (IBC) 2015	Chapter 16 - Fire and Life Safety	Compliant
International Building Code (IBC) 2015	Chapter 24 - Accessible Elements	Compliant
International Building Code (IBC) 2015	Chapter 27 - Energy Efficiency	Compliant
International Building Code (IBC) 2015	Chapter 30 - Mechanical	Compliant
International Building Code (IBC) 2015	Chapter 31 - Electrical	Compliant
International Building Code (IBC) 2015	Chapter 32 - Plumbing	Compliant
International Building Code (IBC) 2015	Chapter 33 - Fuel Gas	Compliant
International Building Code (IBC) 2015	Chapter 34 - Structural	Compliant
International Building Code (IBC) 2015	Chapter 35 - Building Official	Compliant

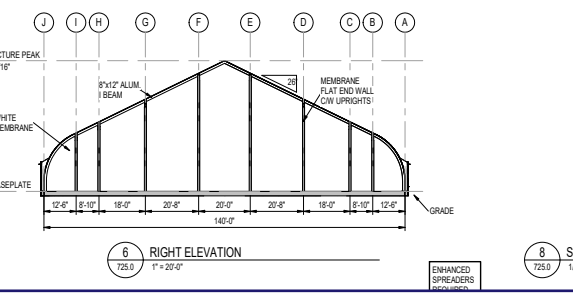
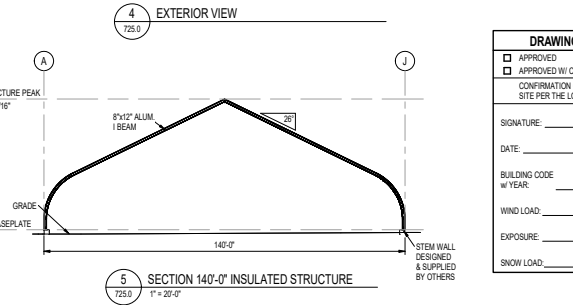
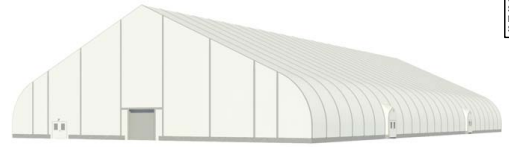


**PERSONNEL DOORS**

CATEGORY	TYPE	HOOD WIDTH	BEAM	DOOR SIZE	COMMENT	COUNT
FLAT END	ODPD	10'-0"	4'-0"	8'-0"x7'-0"	DOOR BY OTHERS & ROUGH OPENING BY SPRING	1
HOOD	ODPD	10'-0"	4'-0"	8'-0"x7'-0"	DOOR BY OTHERS & ROUGH OPENING BY SPRING	3

**ACCESSORIES**

CATEGORY	TYPE	SIZE
CARGO DOOR	ROLLING SERVICE DOOR	12'-0" x 12'-0"
LIGHTING	HOOD LIGHT	



COLORS ON THESE SIGNIFICANTLY DIFFER FROM MONITOR PLEASE ASK SALES FOR SAMPLES FOR CLARIFICATION.

**DRAWING**

APPROVED

APPROVED W/ CONFIRMATION SITE PER THE LC

SIGNATURE: \_\_\_\_\_

DATE: \_\_\_\_\_

BUILDING CODE W/ YEAR: \_\_\_\_\_

WIND LOAD: \_\_\_\_\_

EXPOSURE: \_\_\_\_\_

SNOW LOAD: \_\_\_\_\_



TPWH 1.0

www.instaplex.ch  
info@instaplex.ch



# tennisPlex Aufbau



# Betriebsbereiter tennisPlex



**Let's play...**



# Links

- Video Animation Sprung Structure erection sequence
- tennisPlex
- [www.sprungarena.com](http://www.sprungarena.com)
- Brochure Sprung Arenas
- Broschüre instaPlex Deutsch
- Brochure instaPlex English
- Documentazione instaPlex Italiano
- instaPlex online documents
- instaPlex online Videos
- instaPlex Flyer tennisPlex
- Sprung Flyer Regis College

