



Innovative Building Solutions

Engineered & Manufactured by Sprung Instant Structures



CENTRAL PARK ARENA

Collingwood, Ontario
Ice Rink

Did you know?

Collingwood's Sprung arena, which is open 12 months a year, used the same amount of energy as Collingwood's conventional arena which is only open 8 months a year?

Project Report:

Collingwood now has a second ice rink for year-round use, located in Central Park, to complement the Eddie Bush Arena.

The new rink is a full size, 85ft by 200ft ice surface, complete with premium dasher boards and glass. There is interior spectator seating for 390 people, and a mezzanine lounge for viewing. The lounge can be rented for special events and presentations.

There are six dressing rooms for players, including a dedicated female dressing room. As well, the referee room is capable of accommodating eight referees.



Energy Efficient

Mayor's Message – Central Park Arena

The Town of Collingwood is growing, and as a municipality we need to ensure that our infrastructure and facilities meet the needs of our current and future residents, at a cost we can afford.

In our community we have an historic, downtown arena, however we heard from our residents and visitors that an additional ice surface was needed.

Sprung Structures was a great solution: a unique, patented, energy efficient, ready to use structure to house a full-size ice-pad allowing us to double our available ice time.

A state-of-the-art refrigeration system and a high-insulation factor in the roof and walls ensure that the building is energy efficient. Our users have said the ice surface is of exceptional quality!

The Sprung Company has provided Collingwood with a showcase, state-of-the-art facility, which is the envy of many communities.



Mayor Sandra Cooper
Town of Collingwood



Town of Collingwood Council at the grand opening of the new Central Park Arena – A Sprung Structure!





innovation | versatility | reliability
TOLL FREE 1-800-505-9899
OR (409) 246-2211 www.sprung.com

GENERAL NOTES:

1. ALL PERSONNEL DOORS C/W HOODS SHOULD BE INSULATED WITH UBERGLASS BATT INSULATION C/W INNER LINER, TO DAYLIGHT PANEL LEVEL ONLY. MEMBRANE TO BE FINISHED TO CONCRETE USING ALUM. FLAT BATT MECHANICAL FASTENERS.
2. CONCRETE SHALL BE PERFORMED IN ACCORDANCE WITH CALIFORNIA STATE FIRE MARSHAL, ASTM E84, USC 31--1, UIC5109, & UIC5102.
3. THIS STRUCTURE IS DESIGNED TO SHED SNOW THE PERIMETER OF THE STRUCTURE SHOULD BE VENT CLEAR.
4. WHEN DESIGNING A HEATING, VENTILATION OR AIR CONDITIONING SYSTEM FOR THIS STRUCTURE, ENSURE THAT THIS SYSTEM INTAKES EXHAUSTED AIR AT ANY GIVEN TIME. THIS PROCESS WILL RESULT IN A POSITIVE PRESSURE EXISTING WITHIN THE STRUCTURE. IT WILL BE NECESSARY TO PROVIDE MEANS AND MEASURE TO BE DRAWN INTO THE STRUCTURE.
5. ALL INTERIOR WALLS & ROOF SHALL BE FREE STANDING & UNDEPENDENT OF SPRUNG STRUCTURE.

DESIGN LOADS

STRUCTURE LOCATED COLLINGWOOD, ON BUILDING CODE (AS) 2.08 04
WIND: 35 m/s
GROUND SNOH LOAD: 35. 2.7 04
SE: 2.1 04
SS: 2.5 04 04

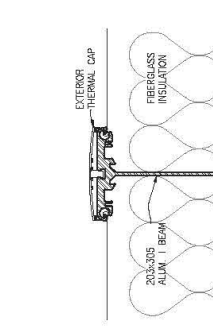
SIGNATURE SERIES

11.17/12.12 REMOVE TOP LINES
12.17/12.12 REMOVE TOP LINES
13.17/12.12 REMOVE TOP LINES & 3.08X WITH 2.08X
14.17/12.12 REMOVE TOP LINES & 3.08X WITH 2.08X
15.17/12.12 REMOVE TOP LINES & 3.08X WITH 2.08X
16.17/12.12 REMOVE TOP LINES & 3.08X WITH 2.08X
17.17/12.12 REMOVE TOP LINES & 3.08X WITH 2.08X
18.17/12.12 REMOVE TOP LINES & 3.08X WITH 2.08X
19.17/12.12 REMOVE TOP LINES & 3.08X WITH 2.08X
20.17/12.12 REMOVE TOP LINES & 3.08X WITH 2.08X
21.17/12.12 REMOVE TOP LINES & 3.08X WITH 2.08X
22.17/12.12 REMOVE TOP LINES & 3.08X WITH 2.08X

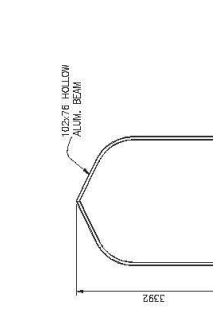
DRAWING APPROVAL
Signature _____
Print Name _____
Date: _____
Confirmation of design loads at site per the local building dept.
WIND: q50 _____ kPa
SNOW: Ss _____ kPa
SNOW: Sr _____ kPa
Initial _____

BILT CONSTRUCTION
TOWN OF COLLINGWOOD
36.6m x 94.5m
HOCKEY ARENA

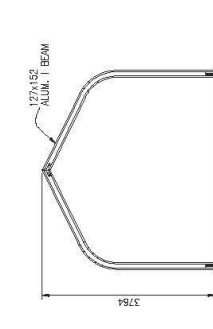
DRAWN: D. BIRNITT DATE: 06/14/2012
CHECKED: WAP
SCALE: AS NOTED
DESIGNER: F. BERTOLDI
DRAWING #: P12-221.0



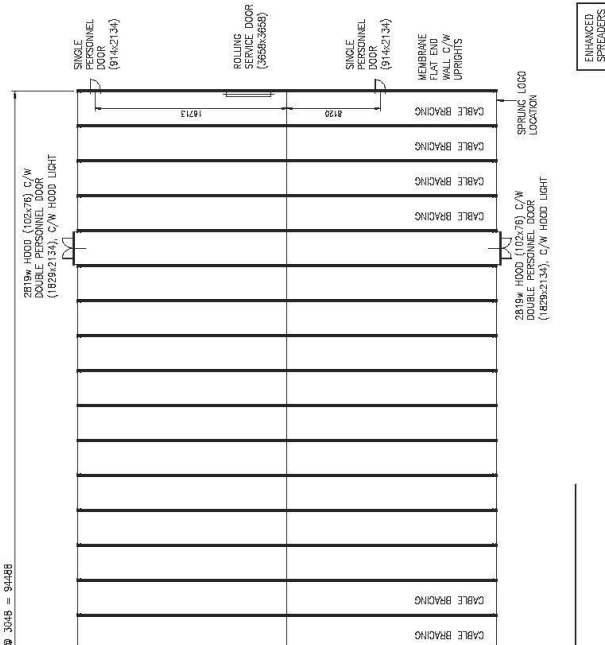
203x305 INSULATED BEAM SECTION
221.0 1:5



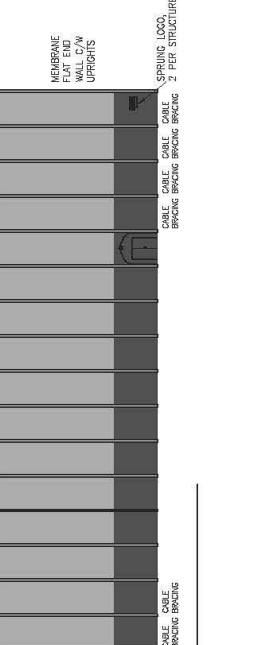
SECTION 2.8m HOOD
221.0 1:50



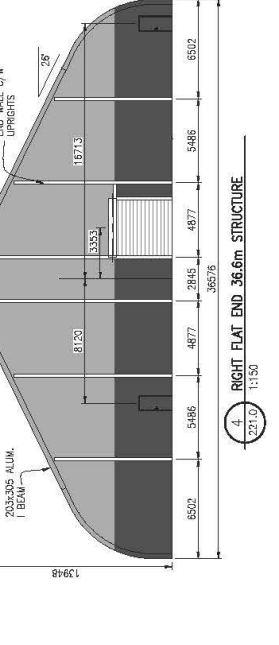
SECTION 4.3m HOOD
221.0 1:50



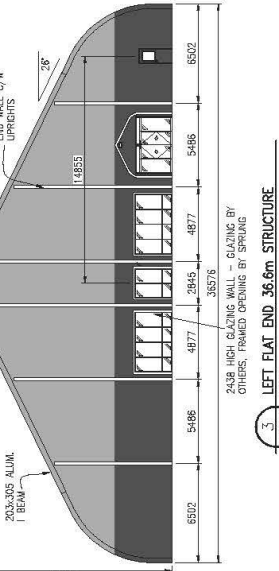
PLAN VIEW
221.0 1:200



ELEVATION
221.0 1:200

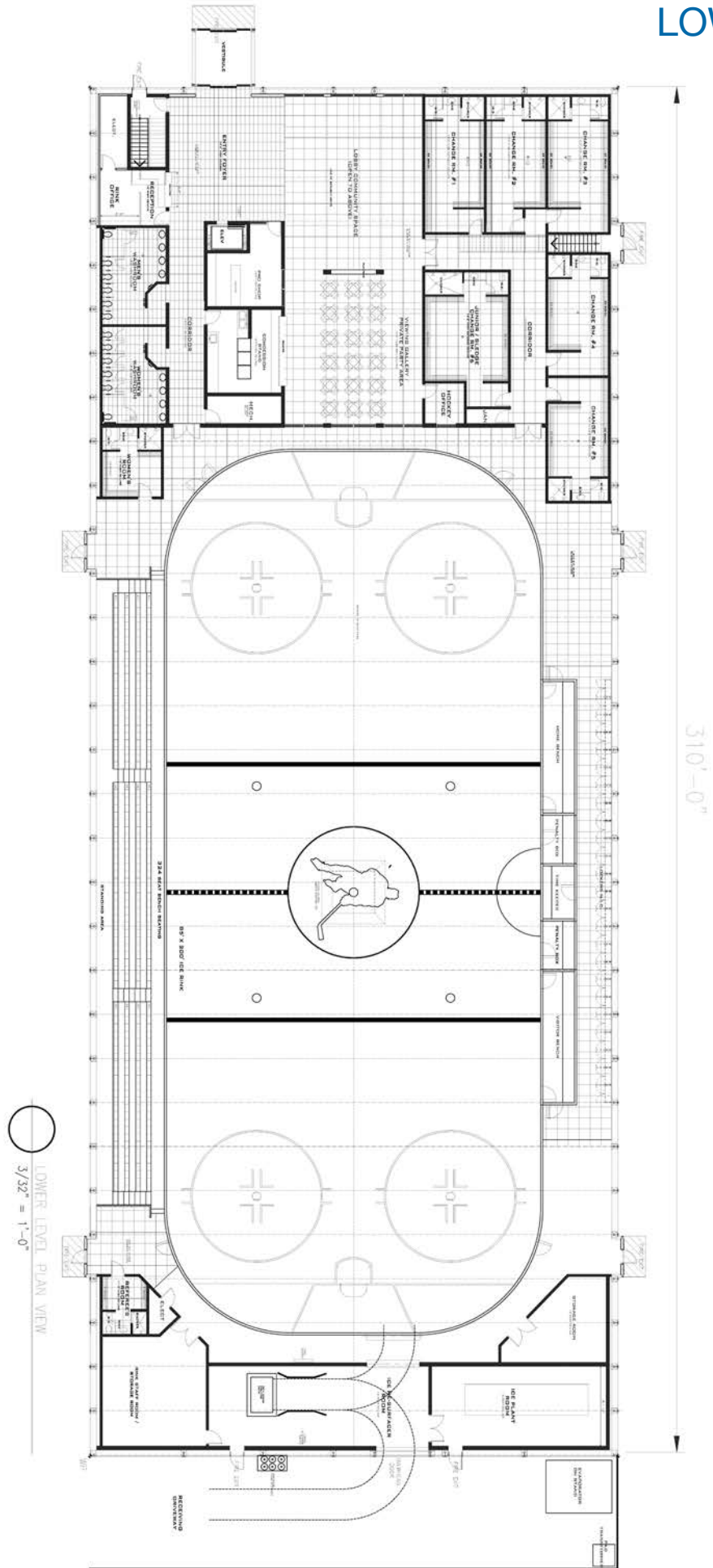


LEFT FLAT END 36.6m STRUCTURE
221.0 1:150



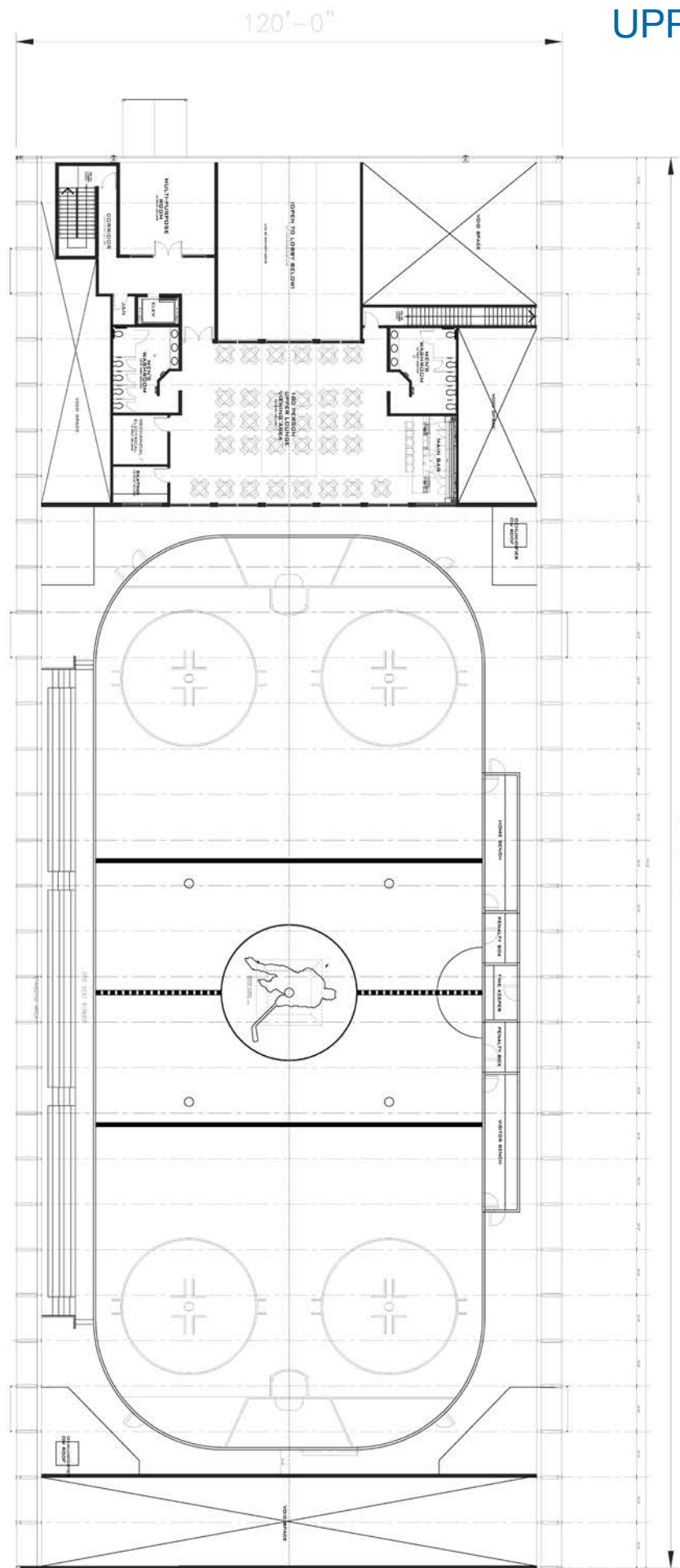
RIGHT FLAT END 36.6m STRUCTURE
221.0 1:150

COLORS ON THESE ELEVATIONS MAY VARY SIGNIFICANTLY DEPENDING ON SURROUNDING CONDITIONS. PLEASE REFER TO MEMBRANE SAMPLES FOR ACTUAL COLORS.



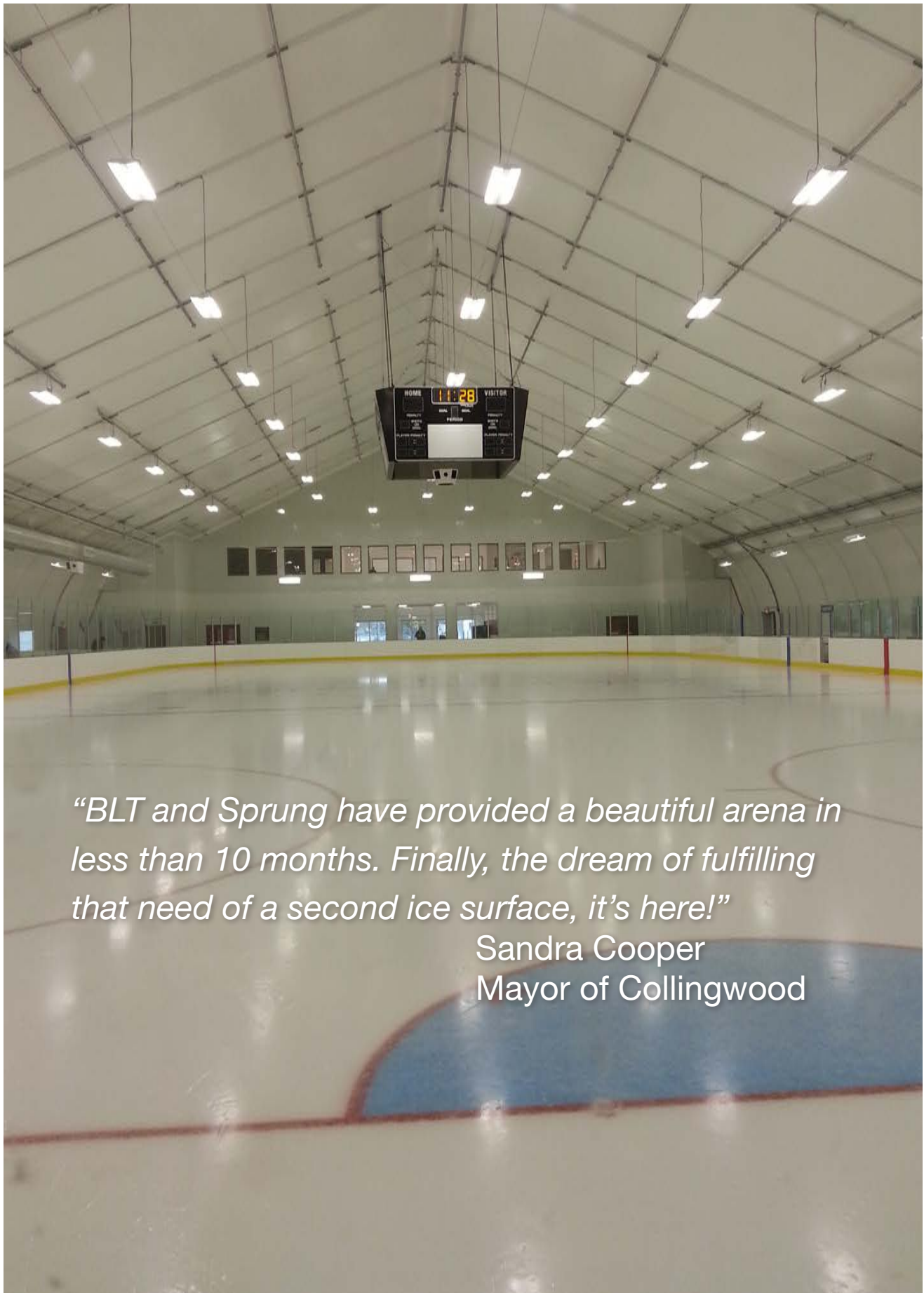
○ LOWER LEVEL PLAN VIEW
3/32" = 1'-0"

UPPER LEVEL



3/700 s.l. MEZZANINE LEVEL PLAN VIEW
 3/32" = 1'-0"





“BLT and Sprung have provided a beautiful arena in less than 10 months. Finally, the dream of fulfilling that need of a second ice surface, it’s here!”

Sandra Cooper
Mayor of Collingwood



