



**Sprung**  
STRUCTURES

**A Faster  
Way to Build**

# TYNDALL AFB

**K9 TRAINING FACILITY**



# Your military structure solution, engineered and manufactured by Sprung Structures



A Faster  
Way to Build



## About the project

### THE ASK

Tyndall AFB was nearly completely destroyed during Hurricane Michael October 7-16, 2018. Three quarters of the traditional buildings on base were either completely destroyed or needed a complete overhaul, and there wasn't a fabric structure left to be found. Tyndall AFB chose Sprung Structures due to speed of delivery and construction, engineering (Structures are designed to meet 165MPH Wind Speed), energy efficiency and flexibility. Tyndall Air Force Base is undergoing a transformation building "The Base of the Future".

### HOW SPRUNG DELIVERED

Sprung Structures in conjunction with their alliance Rogue Industries offer an excellent solution to quickly get new facilities up and running. The destruction has given the base the ability to recreate their training facilities into a more effective training environment for both dogs and handlers. One of their main projects was to update and provide an optimum environment for OB course training. The new outdoor area has artificial turf to protect the dogs' paws from excessive heat and an overhang to protect them from heavy rain and sun. A key feature of the build includes special lighting that is designed to not attract any of the local turtle wildlife.





## About Tyndall AFB

Tyndall Air Force Base is a United States Air Force Base located 12 miles east of Panama City, Florida. The base was named in honor of World War I pilot 1st Lt. Frank Benjamin Tyndall. The base operating unit and host wing is the 325th Fighter Wing of the Air Combat Command. When Hurricane Michael devastated Panama City, Florida and Tyndall Air Force Base in particular, it was decided to rebuild the base because it's a strategic asset for the Air Force and the DoD to ensure air superiority.

The United States K-9 Corps was created March 13, 1942. Military, government and law enforcement organizations have been using the unique skillsets available through K-9 programs.

## THE SPECS

One - 100' wide x 180' long | One- 30' wide x 75' long  
Open sunshade



**These dogs are just like regular Airmen,” said Staff Sgt. Jason Vogt, 325th SFS MWD handler. “They work day to day, driving as hard as they can to complete the mission to best of their abilities.”**

– Jason L. Vogt, TSgt, USAF  
Kennel Master  
325th Security Forces Squadron  
Tyndall AFB, FL, 32403



**TYNDALL TRAINS MWDS  
WITH NEW OBEDIENCE COURSE:**

<https://www.dvidshub.net/video/embed/827974>



## We Know Military

We know the military faces unique challenges, from labor shortages to supply-chain issues, to tightening margins. When aligning with Sprung on a venue build, we help you get back to the core business while we provide:

- Rapid construction
- Design flexibility
- Performance & durability
- Lower overall costs

With Sprung, your new venue can be up and running faster, more cost-effectively and designed with your military needs in mind.



## The Sprung Difference

### ► SPRUNG CARES

Our teams work in some of the most vulnerable environments and harshest conditions. At Sprung, we are deeply committed to positively impacting the communities we serve and applying our innovative ideas to help solve complex problems.

### ► UNMATCHED REPUTATION

Invest in the most reliable, versatile and technically advanced structures globally: Sprung has erected 13,000 structures in more than 100 countries.

### ► ENGINEERED FOR EXTREME CLIMATES

Sprung structures are engineered to withstand extreme weather conditions.

### ► IMMEDIATE DELIVERY FROM INVENTORY

Complete projects in a much shorter time frame than conventional construction.

### ► CUSTOMIZABLE

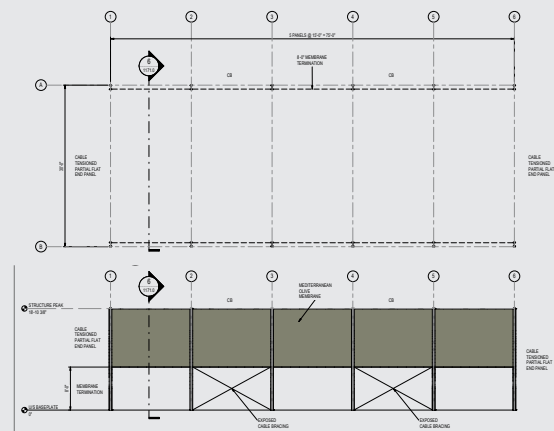
Customizations include performance insulation packages for superior indoor climate control, peak integrated daylight panels, doors and entryways for every application, and countless accessories.

### ► LIMITED FOUNDATION REQUIREMENTS

Save on foundation costs where appropriate soil conditions exist. Concrete foundations are not required for Sprung structures up to 160 ft. in width, saving time and cost for installation.

### ► COST-EFFECTIVE, COMPACT SHIPPING

Enjoy the convenience and cost savings of shipping up to 15,000 sq. ft. in a single, standard ISO container.





## About Sprung

Sprung meets rapid-response building needs in a wide range of leading businesses and organizations including the global armed forces, the natural resources industry, manufacturing, commercial gaming, education, disaster recovery, healthcare, aviation as well as sports and recreation. Sprung has designed and patented tensioned membrane technology that outperforms other building alternatives and offers a faster, better build. Year after year, we continue to engineer the most innovative, versatile and reliable building solutions.

**Sprung has designed and patented tensioned membrane technology that outperforms other building alternatives and offers a faster, better build.**

You can trust us to design and manufacture your facility with speed and quality that far exceeds your expectations. Our experience proves it; our history demands it. In business since 1887, Sprung has completed over 13,000 structures in more than 100 countries.



**A Faster  
Way to Build**